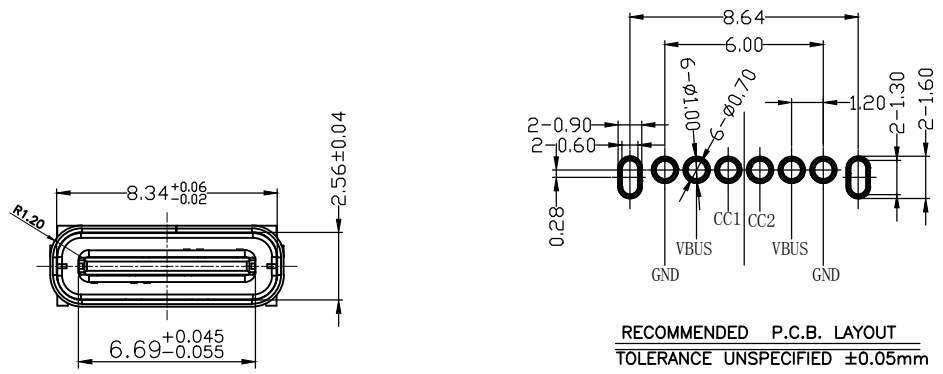


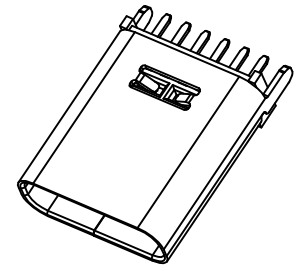
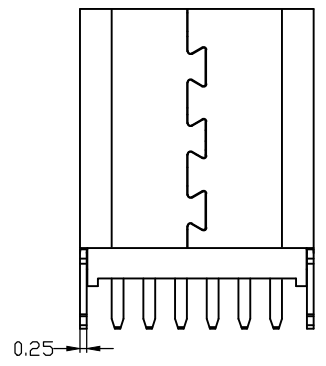
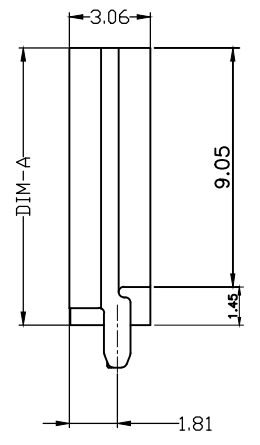
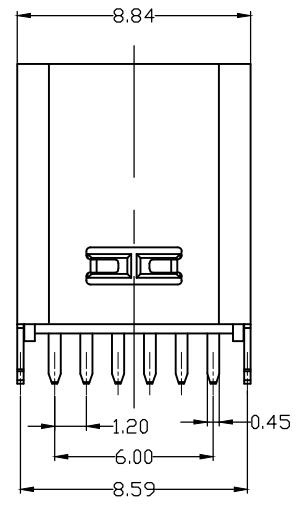
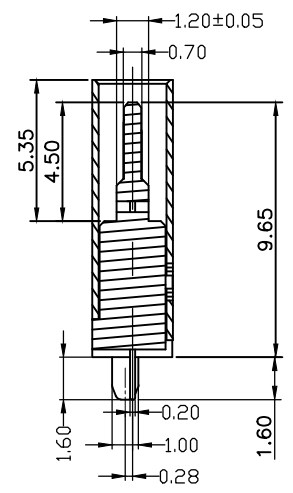
ROHS REACH

Autodesk

版本	发行说明	材料	日期
A	新发行		2023.07.20



- NOTE:
- MATERIAL SPECIFICATION:
 - HOUSING: HIGH TEMPERATURE RESISTANT PLASTIC, UL94 V-0.
 - CONTACTS: COPPER ALLOY
 - SHELL: STAINLESS STEEL
 - PLATING SPECIFICATION:
 - CONTACTS: NICKEL PLATED OVER ALL. Au PLATED ON THE FUNCTIONAL AREA OF CONTACT. (GOLD PLATING THICKNESS FOLLOW THE P/N) TIN PLATING ON SOLDER AREA
 - SHELL: NICKEL UNDER PLATED OVER ALL.
 - MECHANICAL PERFORMANCE,
 - INSERTION FORCE: 0.5~2.0kgf.
 - REMOVAL FORCE: 0.8kgf~2.0kgf.
 - ELECTRICAL PERFORMANCE,
 - CURRENT RATING: 3.0A MAX VOLTAGE RATING: 5.0V
 - INSULATION RESISTANCE: 100MΩ MIN
 - DIELECTRIC WITHSTAND VOLTAGE, AC 100V FOR 1 MINUTE.
 - ENVIRONMENTAL PERFORMANCE:
 - OPERATING TEMPERATURE: -30°C~+80°C.
 - IR REFLOW:
 - THE PEAK TEMPERATURE ON THE BOARD SHALL BE MAINTAINED FOR 10 SECONDS AT 260°C.



B12	GND
B9	VBUS
B5	CC2
A5	CC1
A9	VBUS
A12	GND
PIN	SIGNAL NAME

产品料号	产品规格	DIM-A
A-TPCL0613-00RB	6P-立插-H10.5	10.50
A-TPCL0612-00RB	6P-立插-H10.0	10.00

尺寸	允许公差
x.	±0.50
.X	±0.20
.XX	±0.15
.XXX	±0.10
角度	±1.00°

图纸类型		图纸名称:	
产品工程图		TYPE C-6Pin-立插10.0/10.5 带中夹片	
设计	2023.07.18	产品料号	See table
审核	2023.07.18	视图	
		版号:	A

Autodesk

Autodesk

Autodesk