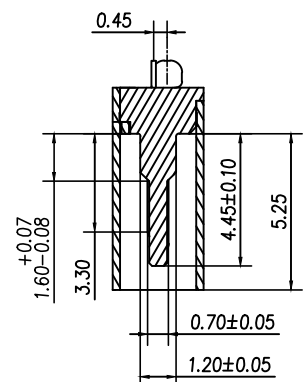
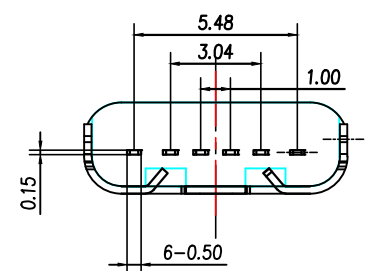
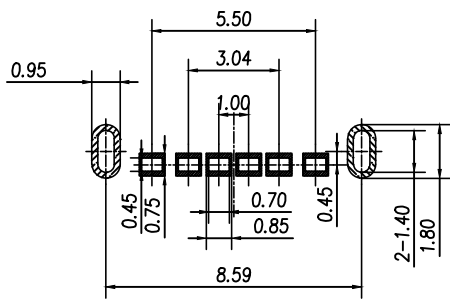
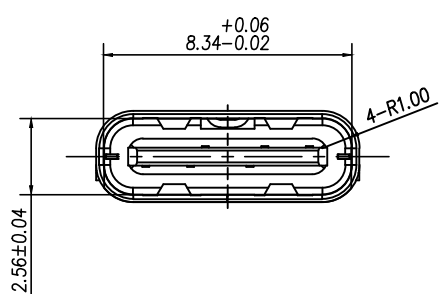
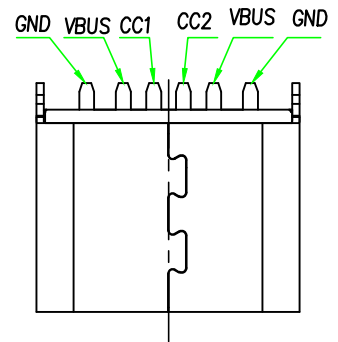
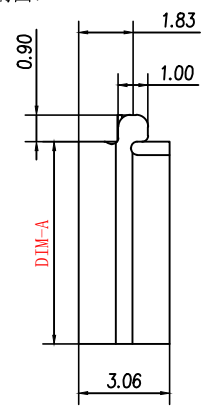
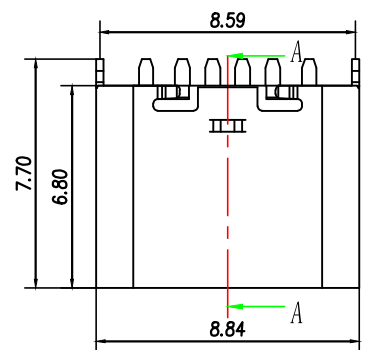


ROHS REACH

Autodesk



剖面: A-A



RECOMMENDED P.C.B. LAYOUT
TOLERANCE UNSPECIFIED ±0.05mm

NOTE:

1. MATERIAL SPECIFICATION:
 1. HOUSING: HIGH TEMPERATURE RESISTANT PLASTIC, UL94 V-0.
 2. CONTACTS: COPPER ALLOY
 3. SHELL: STAINLESS STEEL
 4. HOOK: STAINLESS STEEL
2. PLATING SPECIFICATION:
 - 2-1. CONTACTS:
 - Ni 30u" MIN. UNDER PLATED OVER ALL.
 - Au PLATED ON THE FUNCTIONAL AREA OF CONTACT. (GOLD PLATING THICKNESS FOLLOW THE P/N)
 - 2-2. SHELL:
 - Ni 30u" MIN. UNDER PLATED OVER ALL.
3. MECHANICAL PERFORMANCE,
 - 3-1. INSERTION FORCE: 0.5~2.0kgf.
 - 3-2. REMOVAL FORCE: 0.8kgf~2.0kgf.
4. ELECTRICAL PERFORMANCE,
 - 4-1. CURRENT RATING: 3.0A
VOLTAGE RATING: 5.0V
 - 4-2. INSULATION RESISTANCE: 100MΩ MIN
 - 4-3. DIELECTRIC WITHSTAND VOLTAGE, AC100V FOR 1MINUTE.
5. ENVIRONMENTAL PERFORMANCE:
 - OPERATING TEMPERATURE: -30° C~+80° C.
6. IR REFLOW:
 - THE PEAK TEMPERATURE ON THE BOARD SHALL BE MAINTAINED FOR 10 SECONDS AT 260° C.

规格	DIM-A
6P立插 L6.0	6.00
6P立插 L6.5	6.50
6P立插 L6.8	6.80

一般公差 GENERAL TOLERANCE		绘图 DR.	品名 TITLE
X.X ±0.20	X° ±2°		
X.XX ±0.15	X.X° ±1°	审核 CHK.	TYPE C 6P母座 立插L6.8/L6.5/L6.0
X.XXX ±0.10	X.XX° ±0.5°		
单位 UNIT mm			核准 APPD.

图号 DRAWING NO.		
文件编号 NUMBER		
比例 SCALE 1:1	SHEET 1/1	版次 REV. A0

A0	2023-07-18	新图面发行		
版次 REV.	日期 DATE	变更内容 DESCRIPTION	审核 CHK.	核准 APPD.

Autodesk